

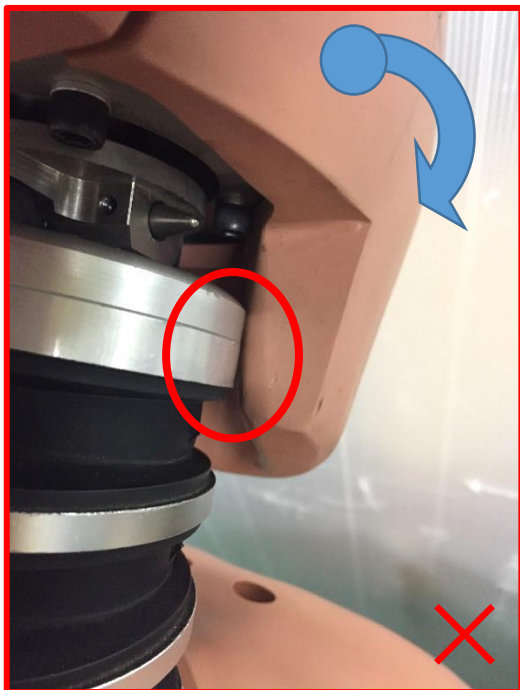
*[ Hybrid-III50th Head Assembly ; Chin hit Neck ]*

ATD should be followed 49CFR Part572.

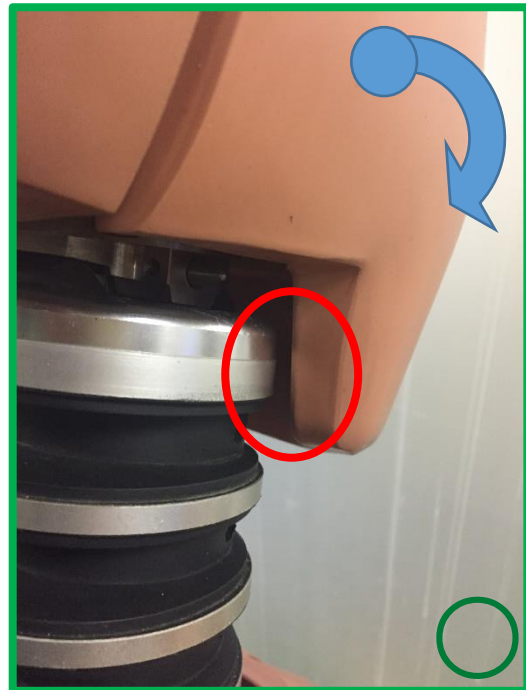
- Market reports : Hybrid-III50th Head Chin width too narrow ;  
Chin part hits the Neck by Neck Certification test or Real car crash test.,  
Head assembly should be free moving without contacting Neck.

**The cause of trouble. : Chin Inside width is narrower than Neck**

**Head Chin and Neck (Others and JASTI)**



**Wrong ; Head Chin contact Neck**



**Correct ; Head Chin is free to Neck.**

Head Assembly parts No. [780-51-61X](#) ( for 6 axis Load cell replacement.)

[78051-61XT](#) ( for 6 axis load cell replacement and Tested)

Any question and/or request to [info@jasti.co.jp](mailto:info@jasti.co.jp)

URL <http://www.jasti.co.jp/product/dummy.html>

**[Thank you for your attention!!!](#)**